

Koenig K 1025 H-2

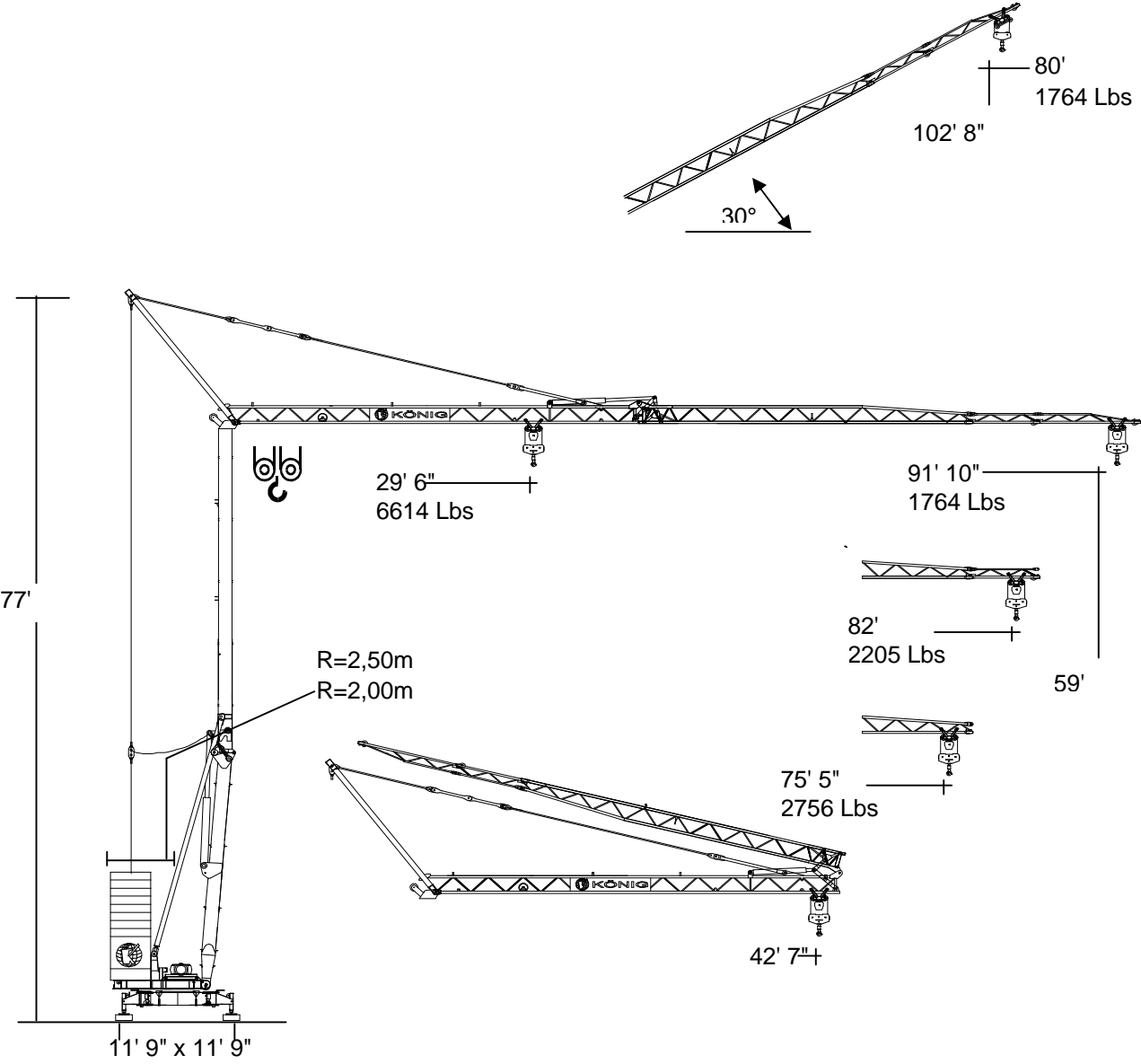
Self-erecting Crane

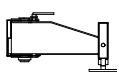
KOENIG CRANES
North America

Bringing Innovation To Construction

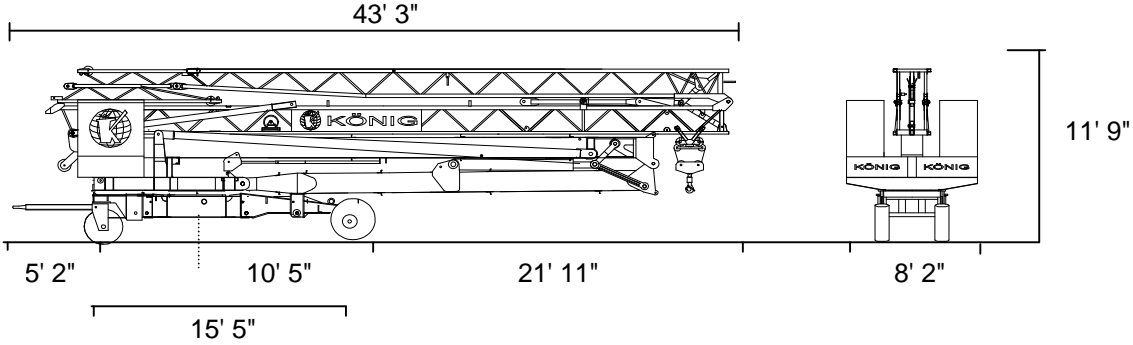
Phone: 887-852-2192 Fax: 604-852-4421
 Email: info@koenigcranes.com Internet: www.koenigcranes.com

K1025 H-2 Technical Data



	In service	Out of service
Reactions	19.6 T	13.9 T

Transport by road



K1025 H-2 Technical Data

Radius and capacity

Ft	0°	T	Ft	39	46	52	59	65	72	75	78	82	85	88	92
92		2.7	37	5247	4365	3726	3241	2844	2535	2403	2293	2183	2072	1984	2896
85		2.7	40	5512	4652	3968	3461	3042	2734	2579	2447	2337			
75		2.7	43	5512	2484	4431	3858	3417	3042	2888					
30°				34	40	46	52	57	63	66	69	74	74	77	80
30°				76	79	83	86	89	93	94	96	97	99	101	102

Ft	0°	T	Ft	36	39	42	46	49	52	59	65	72	75	82	92
92		2.7	37	5512	5158	4673	4279	3924	3637	3152	2756	2425	2315	2094	1807
		3.3	32	5687	5115	4630	4232	3880	3593	3108	2712	2403	2271	2050	1763
82		2.7	39	5512	5512	5004	4564	4211	3880	3373	2954	2645	2491	2249	
		3.3	33	6085	5467	4960	4519	4167	3836	3329	2910	2601	2447	2205	
75		2.7	42.0	5512	5512	5512	5093	4696	4343	3769	3329	2954	2800		
		3.3	36	6614	6107	5533	5048	4652	4299	3726	3285	2910	2756		

Speeds

	Step	m/min.	kg	kW
	1	19-9	5512-6614	3.5
	2	78-39	5512-6614	9
	3	157-78	2425-4850	11
	1	66		1.1
	2	131		1.5
	0-1	sl./min.		2.2



Cross section of cable up to
5x10²

Operation voltage
460 V

Frequency
60 Hz

Power requirement
13.2 kVA (14.7 KW)

Weight

Central ballast weight		6.5 t	Transport weight approx.	19.5 T
Counterweight	R=2,5	6 x 1.6 T	9.9 t	Dead weight approx.
	R=2,0	8 x 1.6 t	13.2 t	

